



LRM-519 Digital Media Recorder with Microsoft® Program Guide Quick Setup Guide

Here

Call us toll-free for technical support:
1-800-984-6306
www.microsoftprogramguide.com

Welcome to the Digital Media Recorder

With the Digital Media Recorder, you can watch and record live TV shows, watch DVDs, copy recorded shows to DVDs, and view photos and play music stored on other computers in your home. All with a TV Program Guide and menu system accessed by using a remote control.

While watching live TV, you can pause a show, rewind the show, or fast forward through a paused/rewound show. You can record TV shows such as series and movies. Shows are recorded to the Recorder and you can create DVDs of recordings to keep in your personal collection. You can even add additional storage for recordings by attaching a USB drive.

This Quick Setup Guide walks you through the basic steps needed to begin enjoying your Digital Media Recorder. For information about additional setup options and using the Digital Media Recorder, see the User's Guide.

STEP 1 The Microsoft® Program Guide

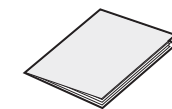
Guide service included free with purchase of the LG LRM-519. For more information about the Microsoft® Program Guide service, visit www.microsoftprogramguide.com

Go to Step 2.

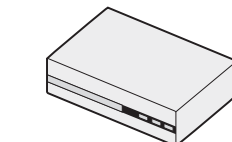
Unpack the box

STEP 2

Quick Setup Guide, User's Guide



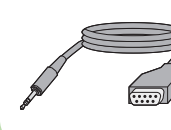
Recorder



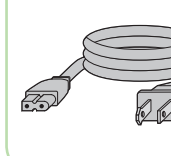
Remote control and 2 AAA Batteries



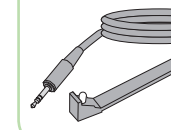
Serial data control cable



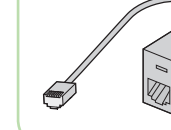
Power cord



IR control cable



Telephone cable splitter



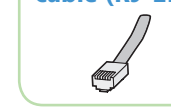
Composite audio/video cable



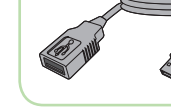
RF (coaxial) cable



Telephone cable (RJ-11)

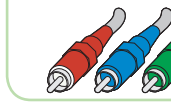


USB extender



Optional cables (not supplied)

Component video cable



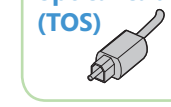
S-Video cable



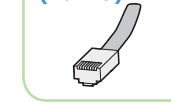
Digital audio coaxial cable



Digital audio optical cable (TOS)



Ethernet cable (RJ-45)

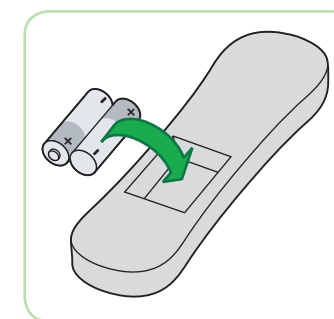


Go to Step 3.

Insert the Batteries into the Remote Control

When inserting the batteries, follow the diagram inside the battery compartment.

STEP 3



Go to Step 4.

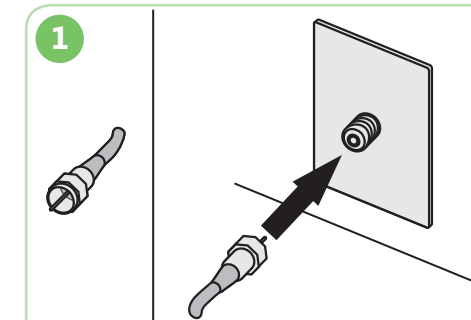
Connect the TV Source to Recorder

Your TV signal comes from a TV source—a TV antenna, standard cable TV service, digital cable TV service, or satellite TV service. The Recorder also supports multiple TV sources, such as an antenna and satellite service connected at the same time.

If your TV source is:	See section:
Standard cable service	4A
Digital cable or satellite service	4B
Antenna	4C
Satellite service and Antenna	4B and 4C

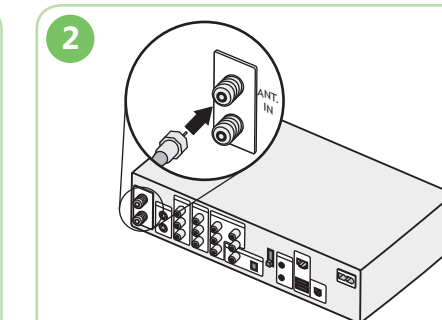
Note To connect other combinations of multiple TV sources, see the User's Guide.

STEP 4A Connect Standard Cable Service



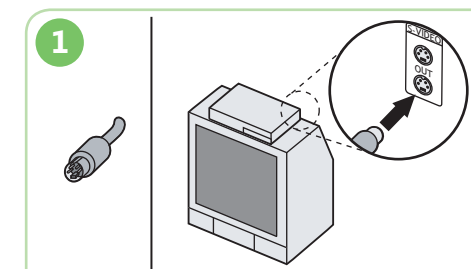
1 Connect the RF (coaxial) cable to the nearest cable TV service connector in the wall outlet.

Go to Step 5.

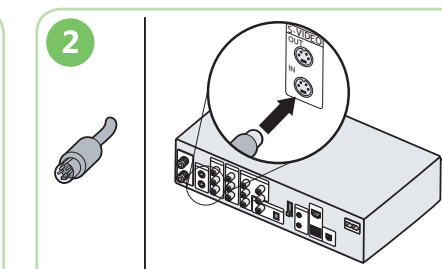


2 On the Recorder, connect the RF cable to the ANT. IN connector.

STEP 4B Connect Digital Cable or Satellite Service



1 On the digital cable or satellite set-top box, connect an S-Video cable or composite video cable to the OUT connector.



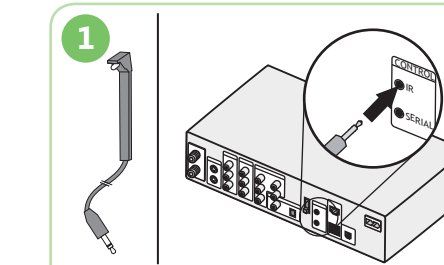
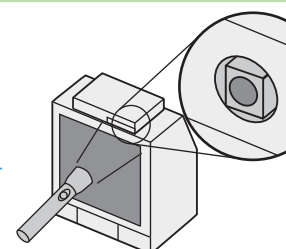
2 On the Recorder, connect the video cable to the S-video or composite IN connector.

Note When you connect a digital cable set-top box or a satellite set-top box to the Recorder, you must use composite or S-Video cables. Using an RF cable to connect a cable set-top box or satellite set-top box to the Recorder is not supported.

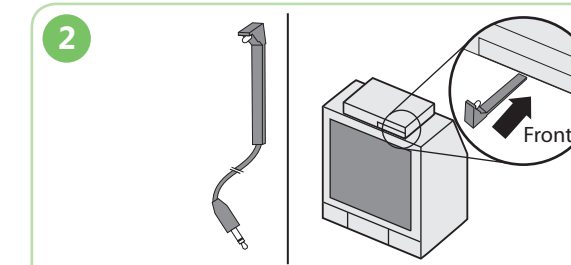
Connect the IR control cable or the serial data control cable

Where do you attach the IR control cable to the digital cable set-top box or satellite set-top box?

To attach the IR control cable to the front of the digital cable set-top box or the satellite set-top box, locate the remote control sensor on the box. Usually this is behind a plastic window—marked IR or IR Receiver—and is a small sensor on a square box. If you cannot find the sensor, shine a flashlight along the front panel of your cable or satellite box.



1 On the Recorder, connect the mini-plug of IR control cable to IR.



2 Place the IR control cable blaster in front of the remote control sensor and press the top of the blaster (with the adhesive tape) to the surface below the set-top box.

Connect the Serial Data Control Cable

The serial data control cable is only used to connect some brands of satellite set-top boxes.

1. Connect the serial data control cable to the serial port on the satellite set-top box.
2. Connect the mini-plug to SERIAL connector of the Recorder.

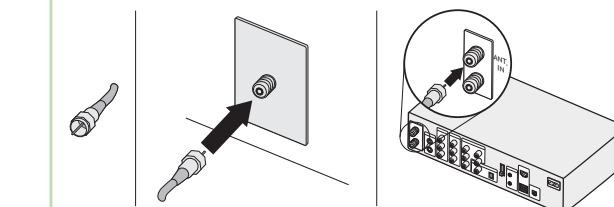
9-pin connector

Note Before you connect the serial data control cable, make sure the power cord for the Recorder and the power cord for the satellite set-top-box are not plugged into a power outlet or power strip.

Go to Step 5.

STEP 4C Connecting to an Antenna

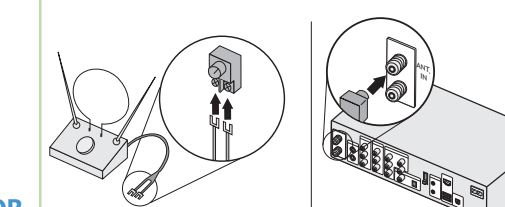
Outdoor Antenna



1. Locate where your antenna signal comes into your house (often, an RF jack in the wall or a long RF cable). If the signal enters through an RF jack, connect an RF cable to the wall jack.
2. On the Recorder, connect the RF cable to ANT. IN.

OR

Indoor (set-top) Antenna





1. If you have a set-top antenna, connect the antenna leads to an RF adapter (not supplied).
2. On the Recorder, connect the RF adapter to ANT. IN.

Go to Step 5.

Connect Recorder to a TV

Check the back of your TV or the TV documentation to determine what types of video connections are available.

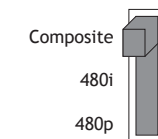
To use: **See section:**

Component video cable (for best picture quality)		5A
S-Video cable (for better picture quality)		5B
Composite video cable (for good picture quality)		5C

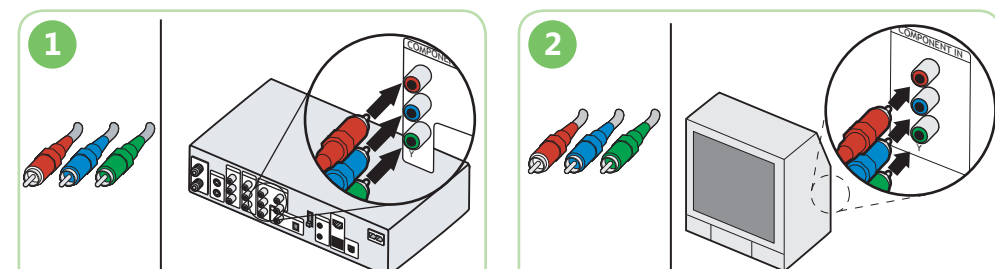
Notes

- When you connect an S-Video cable or a Composite video cable, make sure the **Composite/480i/480p** switch on the back of the Recorder is set to **Composite**.
- Before you change the switch, always make sure the Recorder is turned off.

Important Connecting the Recorder to a TV by using an RF cable is not supported.



STEP 5A Use a Component Video Cable (cable not supplied)



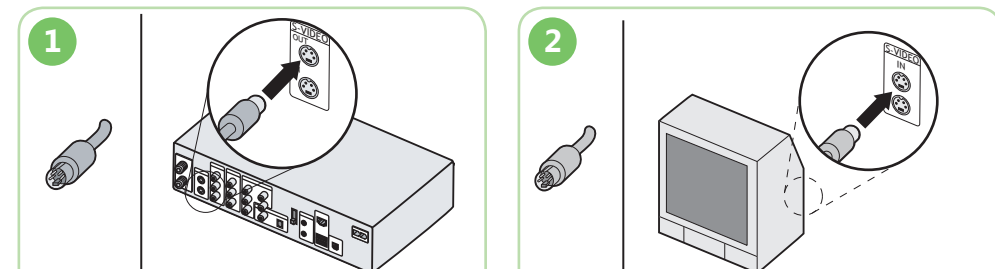
On the Recorder, connect the Component video cable to **COMPONENT OUT**.

On the TV, connect the Component video cable to the Component In jacks.

Note Move the **Composite/480i/480p** selector switch on the back panel to either **480i** or **480p** depending on the type of TV you are connecting to.

Go to step 6.

STEP 5B Use an S-Video Cable (cable not supplied)



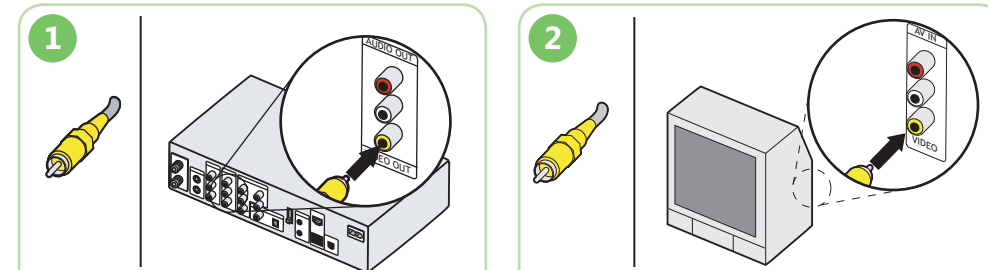
On the Recorder, connect the S-Video cable to **S-VIDEO OUT**.

On the TV, connect the S-Video cable to **S-VIDEO IN**.

Note Move the **Composite/480i/480p** selector switch on the back panel to **Composite**.

Go to step 6.

STEP 5C Use a Composite Video Cable

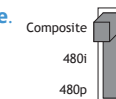


On the Recorder, connect the Composite (yellow) video cable to **VIDEO OUT**.

On the TV, connect the Composite (yellow) video cable to **VIDEO IN**.

Note Move the **Composite/480i/480p** selector switch on the back panel to **Composite**.

Go to step 6.



Audio Setup

The Recorder supports RCA (analog) cables, digital coaxial audio cable and optical (TOS) audio cable.

To use digital audio cable or optical audio cable, see the Recorder User's Guide.

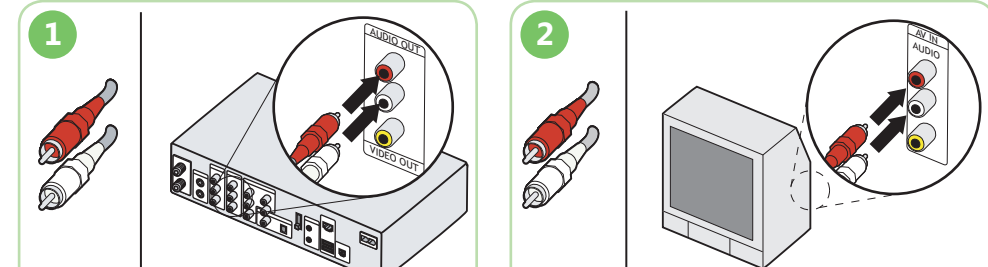
Analog audio cables



Digital coaxial/optical audio cables (Not supplied)



STEP 6



On the Recorder, connect the audio (red and white) cables to **AUDIO OUT**. Red is the right channel, white is the left channel.

On the TV, connect the audio cables to the **AUDIO IN**.

Go to Step 7.

Connect to the Microsoft® Program Guide Service

For information about the **Microsoft Program Guide** service, see Step 1.

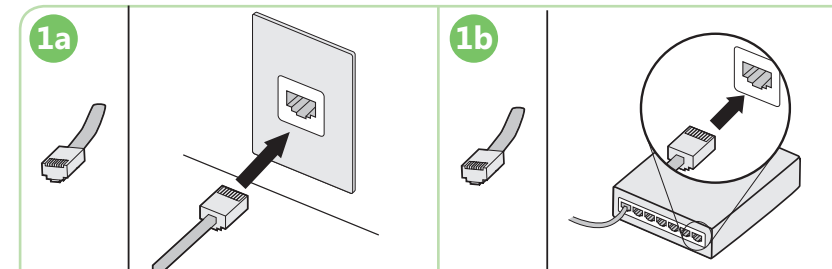
To connect using: **See section:**

Broadband Internet access (wired (Ethernet); cable not supplied)	7A
Broadband Internet access (USB wireless network adaptor; adaptor not supplied)	7B
Dial-up service	7C

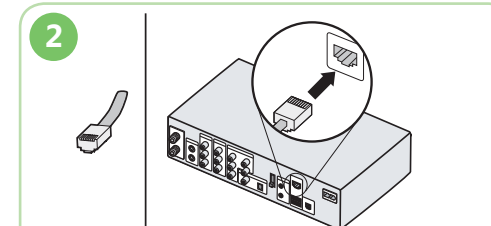
STEP 7

Note The first time you setup the Recorder, the Recorder checks to see if there is an update to the Recorder software. In addition, the Recorder will occasionally check for additional software updates. Whenever there is an update, the Recorder will download the software update first before updating any Guide listings. If you use a dial-up service to connect to the Internet, this download may take up to 3 hours to complete.

STEP 7A Connect to Broadband Internet Access by Using a Wired Connection



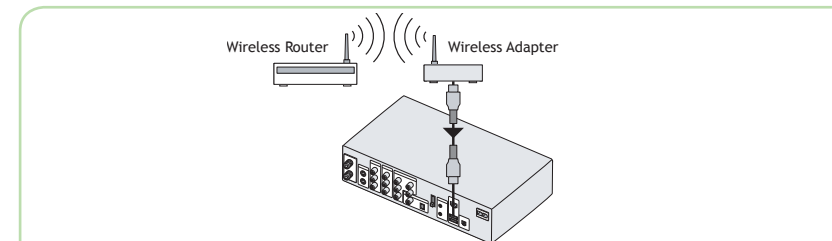
Connect an **RJ-45 Ethernet cable (not supplied)** to a network port in the wall (1a) or a network router (1b).



On the Recorder, connect the Ethernet cable to the **ETHERNET** port.

Go to Step 8.

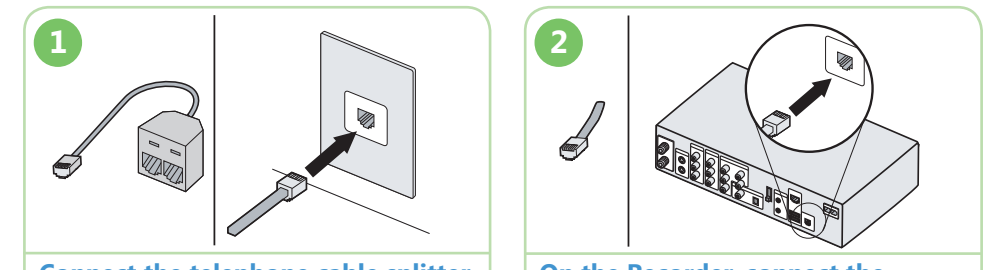
STEP 7B Connect to Broadband Internet Access by Using a USB Wireless Network Adaptor



On the Recorder, connect a **USB wireless network adaptor** to one of the **USB** ports. For more information, see page 25 of the User's Guide

Go to Step 8.

STEP 7C Connect to Dial-up Service



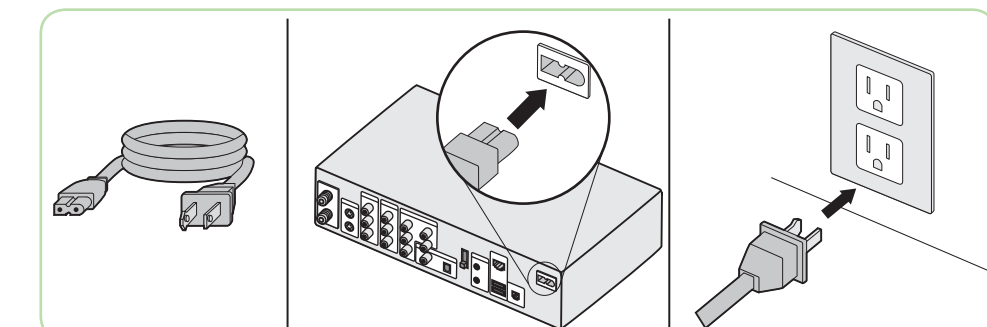
Connect the telephone cable splitter into a telephone wall jack.

On the Recorder, connect the telephone cable to the **PHONE** port.

Go to Step 8.

Attach the Power Cord to Recorder

Attach the power cord to the Recorder and then plug the power cord into a wall socket or a surge protector.



Go to step 9.

Power on the TV

If the TV screen is blank or showing a TV program, use your TV remote control or the front panel of the TV to change the TV video source. Press **TV/VIDEO** (the button might be marked **SOURCE**, **INPUT**, **VIDEO 1**, **VIDEO 2**, etc.) until you see the Welcome screen for the Recorder setup wizard.

Programming the Digital Media Recorder's Remote Control to control your TV.

The Recorder's remote control can be used to control several functions of LG brand TVs without programming, such as power on/off, volume up/down, mute volume and change TV input or video source. To control TV brands other than LG:

- Make sure your TV is powered on.
- Press and hold the Recorder remote control's **TV POWER** button.
- At the same time, use the 0-9 buttons to enter the manufacturer code for your TV (find a list of manufacturer brands on pages 28-29 of the User's Guide).
- The TV will power off if the correct code was entered.
- Press the **TV POWER** button again. The TV should power on. Press the **VOL+/-** and **MUTE** buttons to adjust the TV volume.
- If all TV functions are working correctly, remote control setup is complete. If some TV functions were not controlled, repeat steps 2 to 5 using any other available code for your TV manufacturer.

Note For more information about programming the remote control, see pages 26-29 of the User's Guide.

Go to step 10.

Finish Setup

Follow the on-screen instructions to complete the setup of the Recorder.

Remote Control Reference

Navigation and DVD Controls

- Displays Start menu
- Displays Recorded TV programs
- Jumps back to the previous screen
- Selects current menu item
- Toggles between the mini and full Program Guides
- Displays information about the current live or recorded TV program
- Move up, down, left or right between menu items
- Launches full screen TV; jumps to what's on now in live TV
- Displays the top-level (main) DVD menu
- Changes DVD audio options
- Displays DVD subtitles
- Changes between different angles on the DVD. Not available on all DVDs



Playback Controls

- Plays your selection
- Stops current playing or recording media
- Rewinds through your media
- Jumps back seven seconds of recorded or live TV, one DVD chapter, or one music track
- Records selected TV programs
- Pauses live or recorded TV, audio, or slide shows
- Fast forwards through your media
- Jumps ahead 30 seconds in recorded TV, one DVD track or one music track

